

# Heavy-Duty Suspension System CS-2000 System 80

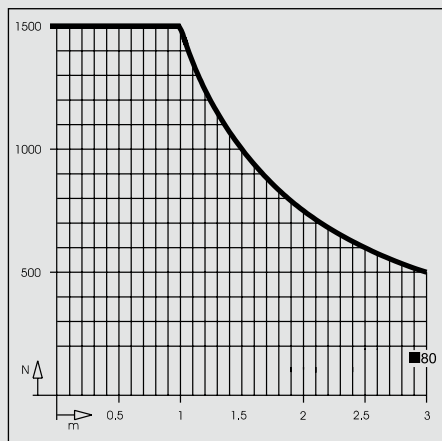
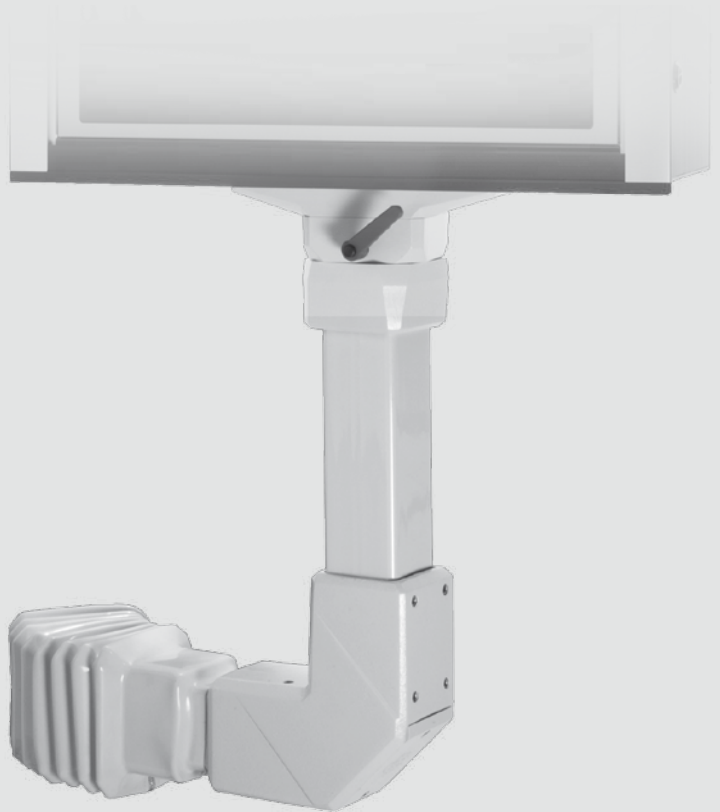
With its large number of components, the BERNSTEIN CS-2000 System 80 suspension system offers technically perfected solutions for a wide range of applications.

## System structure

The following conditions are decisive for selecting the right system:

- Load of overall system
- Clear cable leadthrough if necessary
- Design
- System constellation

After determining the correct size of suspension system, the corresponding components and tubes are selected to build up the required system constellation.



## Load diagram

The overview on Pages 112/113 is designed to help you determine the load bearing capacity of all BERNSTEIN suspension systems.

## Materials

- Aluminium components: Cast aluminium
- Cast steel components: GGG 40
- Welded steel structures: St 37
- Support tubes: St 37
- Bearings: St/PTFE or POM
- Seals: CR
- Installation openings: Cast aluminium
- Gaiters: PVC

## Colours

- Suspension system components: Light grey, RAL 7035
- Gaiters: Light grey, RAL 7035
- Tubing: Light grey, RAL 7035

## System features

- Installation openings at all joints for easy cable installation
- Integrated strain relief for gripping cables
- Wide range of available components for variable configurations
- Maintenance-free no-play bearings in all joints and couplings
- Adjustment facilities for precisely aligning support tubes
- Wall and intermediate joints with adjustable torque and retrofitable swivel angle limiter (available as accessory)
- Flange couplings with adjustable firmness and retrofitable rotation angle limiter
- Overhead installation of all components possible

The steel tubes for the CS-2000 System 80 suspension system are available in different lengths (tube lengths in accordance with DIN 7168).

Weight: 11.0 kg/m

## This image shows a full page of blank graph paper. The background is a solid light gray color. Overlaid on this background is a precise grid of thin, dark gray horizontal and vertical lines. These lines intersect to form a series of small, identical squares that cover the entire area of the page, leaving no margins or other markings.

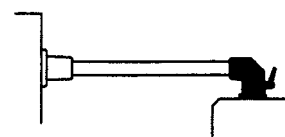
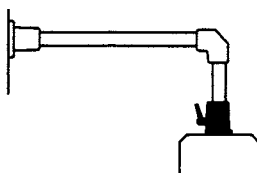
# Heavy-Duty Suspension System CS-2000 System 80

Article		Standard coupling, flange CS-2000	Elbow coupling, flange CS-2000
Article number	(colour)	1016702000 RAL 7035 light grey	1016705000 RAL 7035 light grey

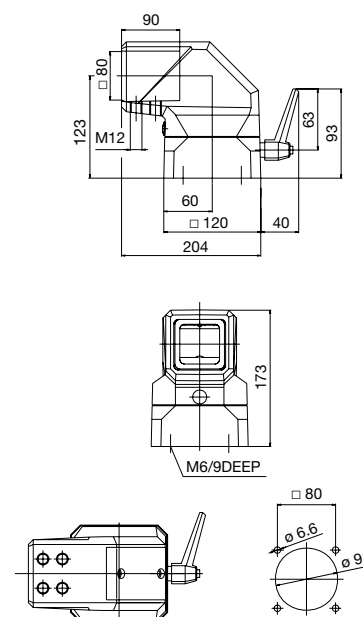
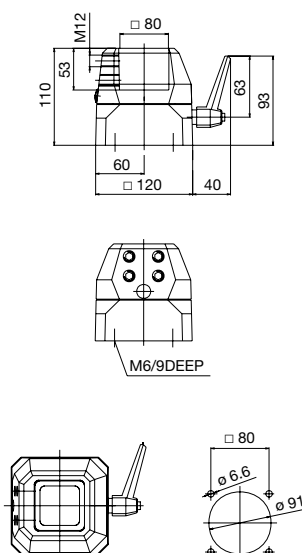


Details	Angle of rotation 300° with stop. Complete with seals and mounting screws. Adjustable torque.	Angle of rotation 300° with stop. Complete with seals and mounting screws. Adjustable torque. Installation opening.
Weight in g	3270	4100
Material	Aluminium	Aluminium
Accessories (retrofitable)	Swivel angle limiter 9805176000	Swivel angle limiter 9805176000 Signal lamp adapter 9805189000

## Application example



## Dimensions in mm



**Turn/tilt coupling CS-2000**
**1016321000**

RAL 7035 light grey


**Elbow CS-2000**
**1016708000**

RAL 7035 light grey


**Elbow for torque load CS-2000**
**1016711000**

RAL 7035 light grey



Angle of rotation 300° with stop. Infinitely variable inclination from 0 to 30°. Complete with seals and mounting screws.

2900

Aluminium and PA

Installation opening. Complete with seals

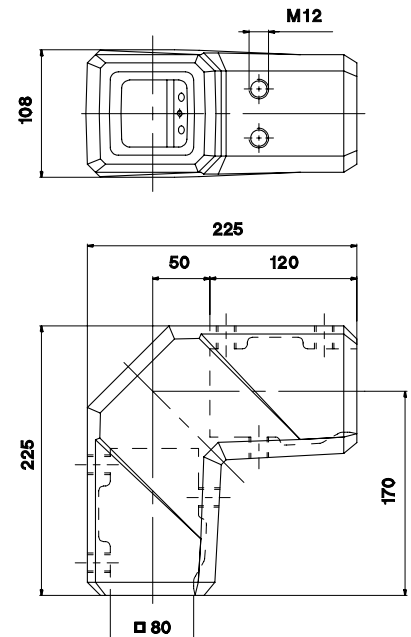
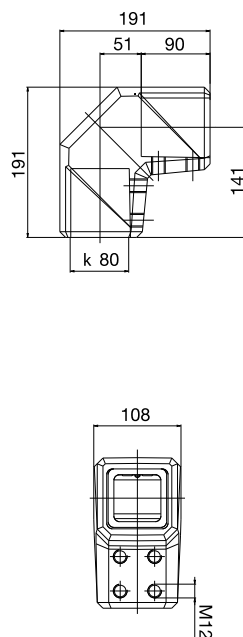
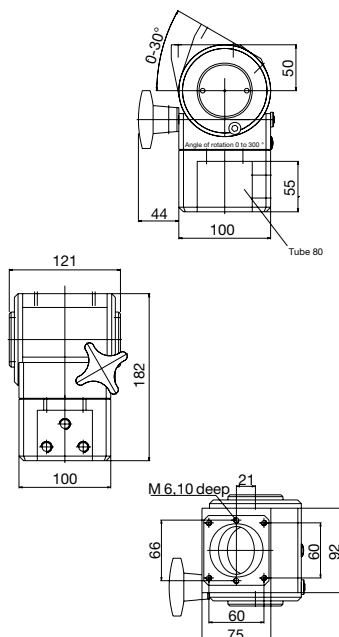
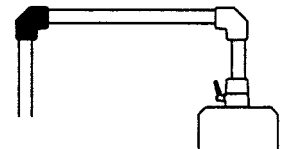
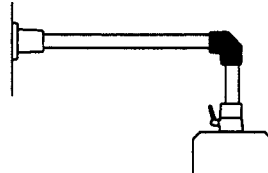
2900

Aluminium

Increased load bearing capacity. Complete with seals. Installation opening.

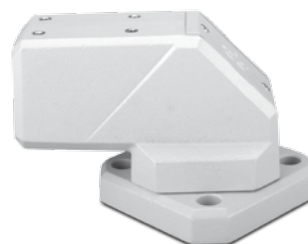
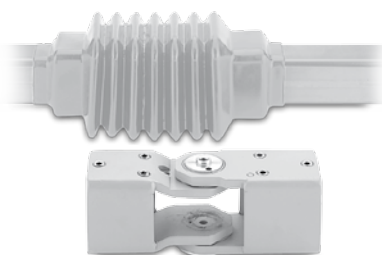
8500

GGG

**Swivel angle limiter 9805130000**
**Signal lamp adapter 9805189000**
**Signal lamp adapter 9805189000**


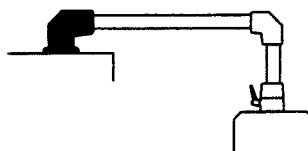
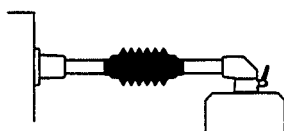
# Heavy-Duty Suspension System CS-2000 System 80

Article		Intermediate joint CS-2000	Top joint CS-2000
Article number	(colour)	1016471000 RAL 7035 light grey	1016714000 RAL 7035 light grey

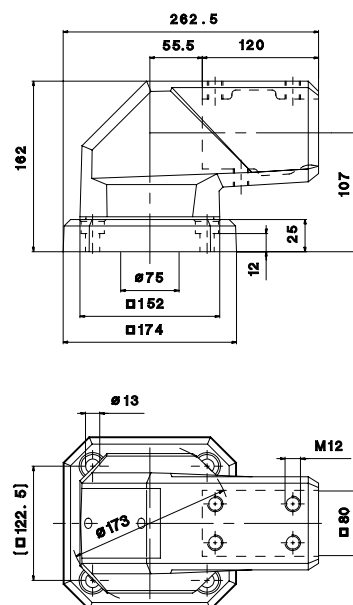
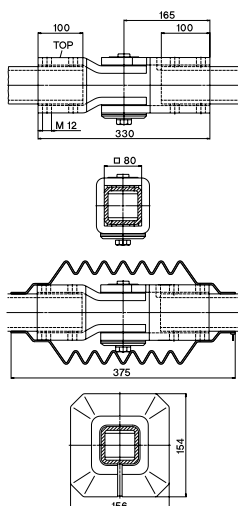


Details	With gaiter attached with zip fastener. Swivel angle 180° with stop on both sides. Torque adjustment	Angle of rotation 306° with stop. Complete with seals and mounting screws.
Weight in g	9700	20620
Material	Steel	GGG
Accessories (retrofitable)	Swivel angle limiter 9805062000	Swivel angle limiter 9805177000 Signal lamp adapter 9805188000

## Application example



## Dimensions in mm



**Wall joint CS-2000**
**1016473000**

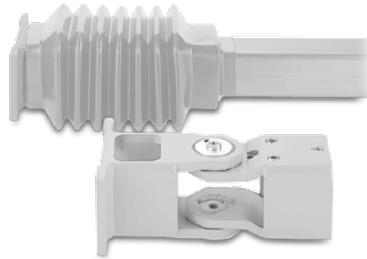
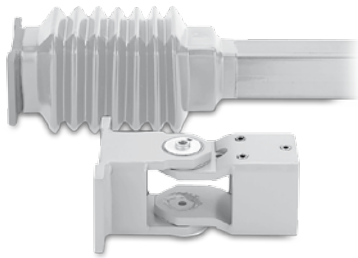
RAL 7035 light grey

**Wall joint for cable leadthrough CS-2000**
**1016474000**

RAL 7035 light grey

**Wall flange CS-2000**
**1016472000**

RAL 7035 light grey



With gaiter attached with zip fastener.  
Swivel angle 180° with stop on both sides.  
Torque adjustment

9250

Steel

With gaiter attached with zip fastener.  
Swivel angle 180° with stop on both sides.  
Torque adjustment

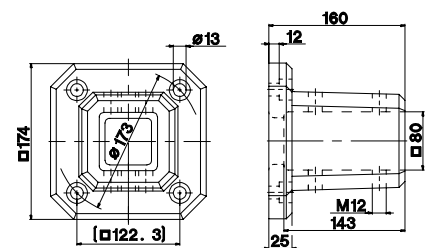
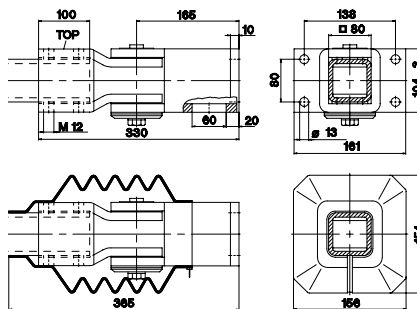
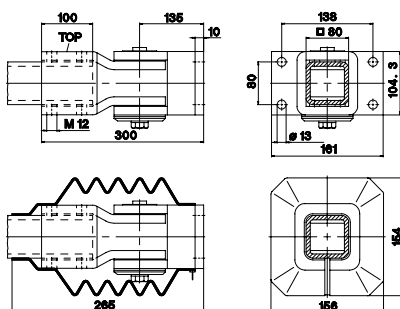
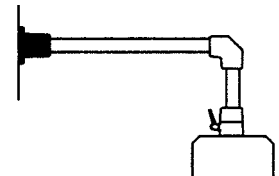
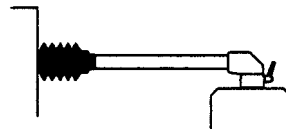
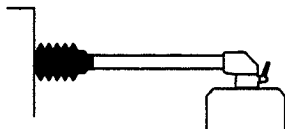
9500

Steel

Complete with seals

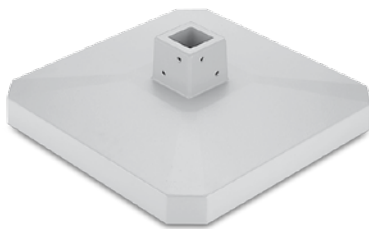
9100

GGG

**Swivel angle limiter 9805062000**
**Swivel angle limiter 9805062000**


# Heavy-Duty Suspension System CS-2000 System 80

Article		Base CS-2000	Free-standing base CS-2000
Article number	(colour)	1016475000RAL 7035 light grey	1016323000RAL 7035 light grey



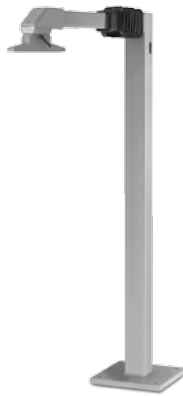
Details	Complete with seals	For free-standing applications
Weight in g	9240	14300
Material	GGG	Aluminium
Accessories (retrofitable)		
Application example		
Dimensions in mm	<p>Technical drawing of the Base CS-2000 showing dimensions: 160, 12, 80, 143, 25, M12, 173, 174, 122.5, 13.</p>	<p>Technical drawing of the Free-standing base CS-2000 showing dimensions: 180, 90, 80, 12, 85, 15, 60, 45, 550.</p>

**Support column, upright version**
**1016558000**

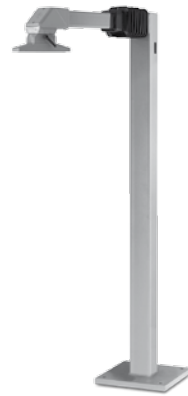
RAL 7035 light grey


**Support column, suspended version, 250 mm tube**
**1016555000**

RAL 7035 light grey


**Support column, suspended version, 500 mm tube**
**1016556000**

RAL 7035 light grey



27220

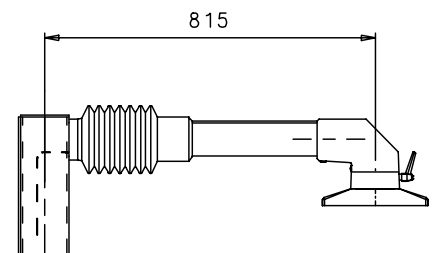
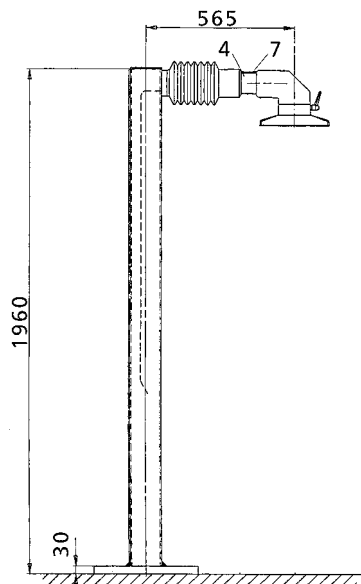
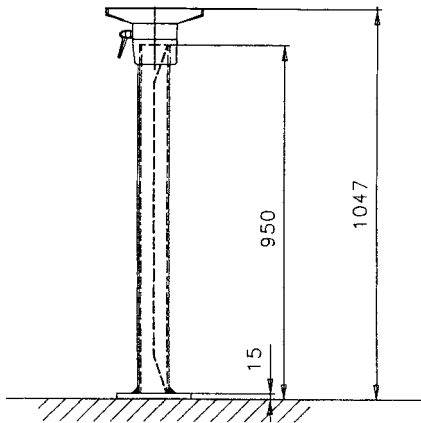
Steel / Aluminium

102000

Steel / Aluminium

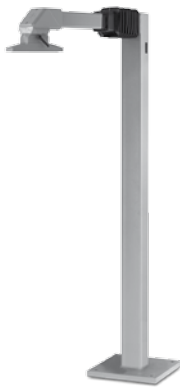
105000

Steel / Aluminium



# Heavy-Duty Suspension System CS-2000 System 80

<b>Article</b>		<b>Support column, suspended version, 750 mm tube</b>	<b>Adapter flange CS-2000</b>
<b>Article number</b>	<b>(colour)</b>	<b>1016557000</b> RAL 7035 light grey	<b>9806213000</b> RAL 7035 light grey



<b>Details</b>		
Weight in g	41000	1100
Material	Steel / Aluminium	Aluminium
<b>Accessories</b> (retrofitable)		
<b>Application example</b>		
<b>Dimensions in mm</b>		

**Tilt adapter CS-2000 15° = 460**
**1016459000**

RAL 7035 light grey

**Tilt adapter CS-2000 30° = 600**
**1016460000**

RAL 7035 light grey

**Tilt adapter CS-2000 60° = 800**
**1016461000**

RAL 7035 light grey



A = 15°, B = 39

A = 30°, B = 66

A = 60°, B = 111

460

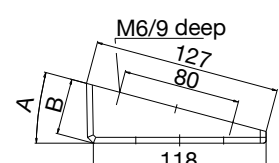
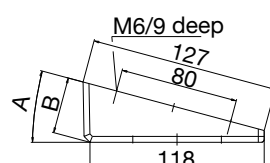
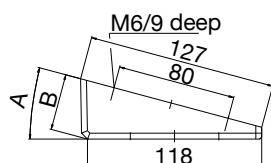
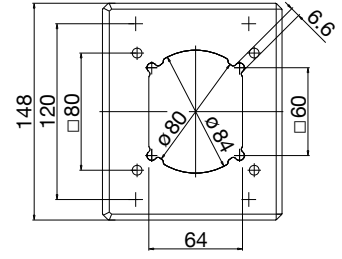
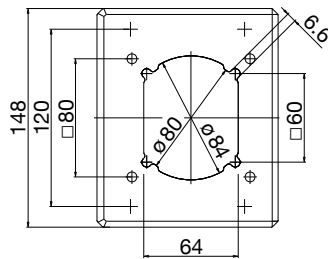
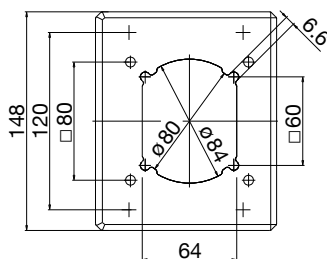
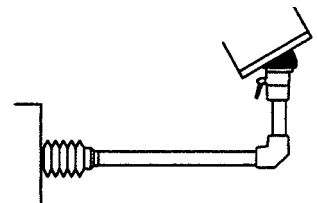
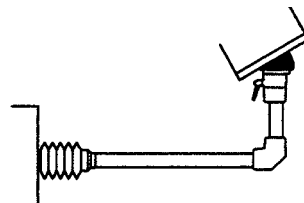
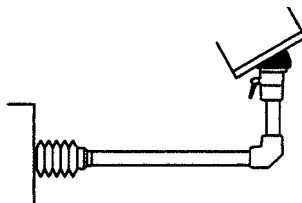
Aluminium

600

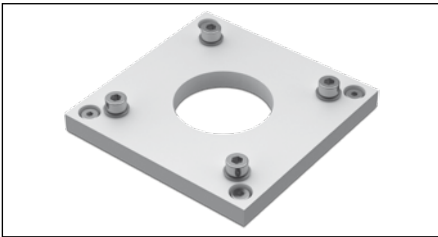
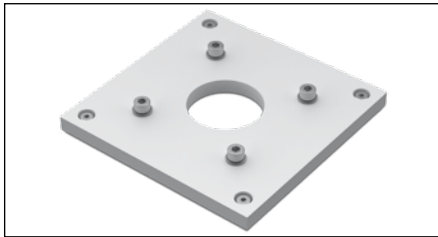
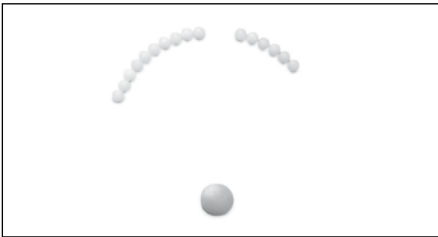
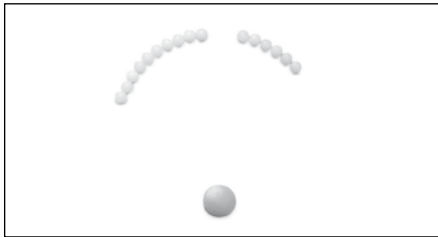


Aluminium

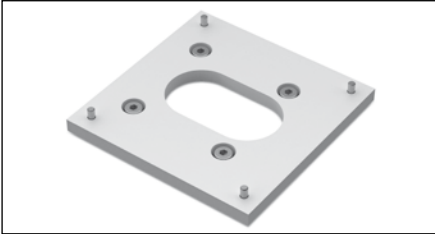
800

Aluminium

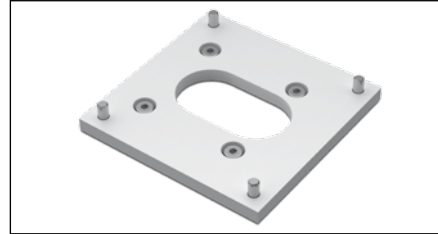


## Accessories for Suspension Systems CS-2000 SL and System 80

Article	CS-1000 VESA 75/M4	CS-1000 VESA 100/M4
Article number	9806675000	9806676000
		
Design	For rear attachment of monitors or similar with VESA 75 flange on CS-1000 suspension arm system	For rear attachment of monitors or similar with VESA 100 flange on CS-1000 suspension arm system
Article	Swivel angle limiter for coupling components, CS-2000 SL system	Swivel angle limiter for coupling components, CS-2000 System 80
Article number	9805129000	9805176000
		
Design	Easy-to-retrofit swivel angle limiter. After installation, the balls limit the swivel angle. Adjustable in steps of 8.5°. Material PA.	Easy-to-retrofit swivel angle limiter. After installation, the balls limit the swivel angle. Adjustable in steps of 9°. Material PA.
Article	Signal lamp adapter CS-2000 System 80	Fixed castors for large free-standing bases CS-2000 SL and CS-2000 System 80
Article number	9805189000	9806043000
		
Design	Easy-to-retrofit signal lamp adapter. Installation opening for signal lamp tubes with outside diameter of 25 mm, secured on side with setscrews. Colour: RAL 7035 light grey Material aluminium.	Complete with installation material and instructions for large free-standing bases. Set of 2.

**CS-2000 SL Panel VESA 100/M4**
**9806677000**


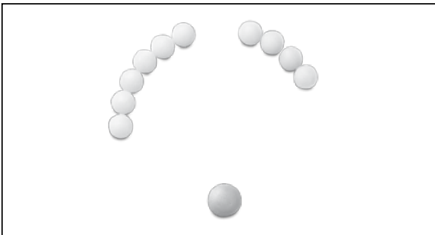
For rear attachment of monitors or similar with VESA 100 flange by means of CS-2000-SL panel couplings (with M4 thread for monitors)

**CS-2000 SL Panel VESA 100/M6**
**9806698000**


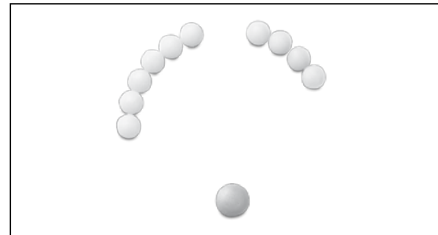
For rear attachment of monitors or similar with VESA 100 flange by means of CS-2000-SL panel couplings (with M4 thread for monitors)

**Swivel angle limiter for wall and intermediate joints CS-2000 System 80**
**9805062000**

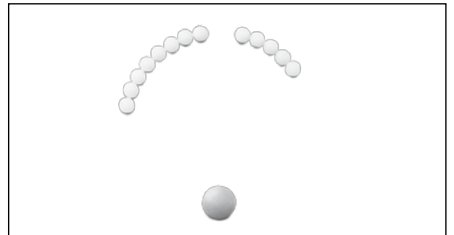

Swivel angle limiter as retrofittable accessory kit for wall and intermediate joints. Swivel angle range adjustable and fixed in steps of 15°. Material steel.

**Swivel angle limiter for joint components System CS-2000 SL**
**9805132000**


Easy-to-retrofit swivel angle limiter. After installation, the balls limit the swivel angle. Adjustable in steps of 14°. Material PA.

**Swivel angle limiter for joint components CS-2000 System 80**
**9805177000**


Easy-to-retrofit swivel angle limiter. After installation, the balls limit the swivel angle. Adjustable in steps of 8.5°. Material PA.

**Swivel angle limiter for turn/tilt couplings System CS-2000 SL and CS-2000 System 80**
**9805130000**


Easy-to-retrofit swivel angle limiter. After installation, the balls limit the swivel angle. Adjustable in steps of 8.5°. Material PA.

**Swivel castors for large free-standing bases CS-2000 SL and CS-2000 System 80**
**9806044000**


Complete with installation material and instructions for large free-standing bases. Set of 2.

**Adjustment feet for large free-standing bases CS-2000 SL and CS-2000 System 80**
**9806045000**


Complete with installation material and instructions for large free-standing bases. Set of 2.